

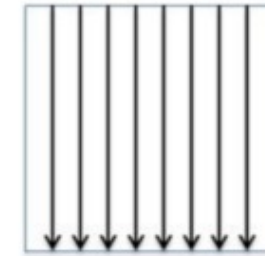
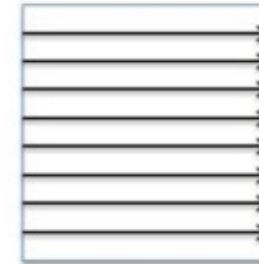
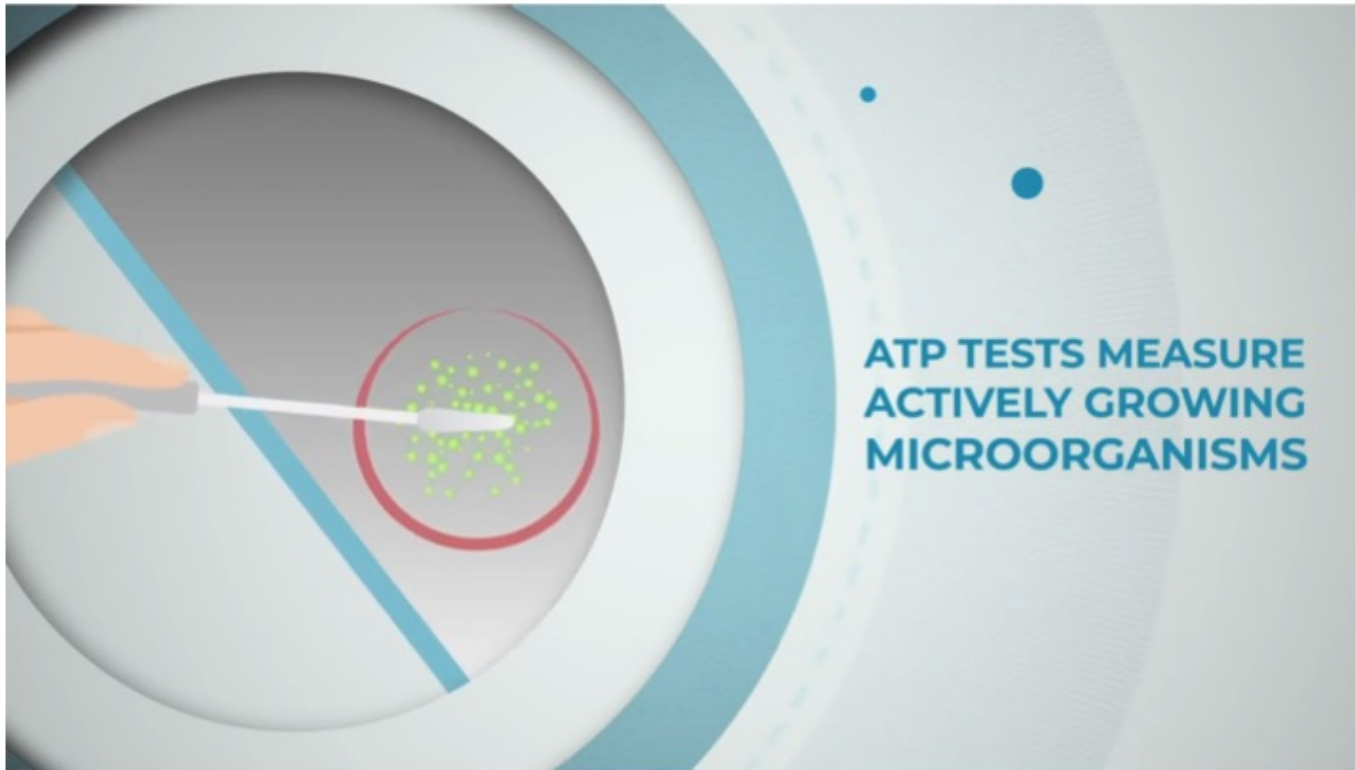


**Overview of Bactiscan
A Hand Held Bacteria and Biofilm Detection
System
NBIC Biofilm Prevention Workshop**

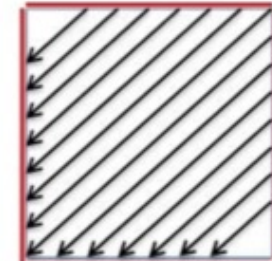
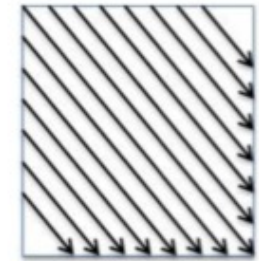
Bactiview



ATP Sampling (ATP is a molecule found in all cells)



Using a template, ensure full coverage of the surface area.



Keep sampling area size consistent between samples

End by tracing the perimeter.



Introducing Bactiscan

With its unique wave alternating UV system, Bactiscan enables users to immediately isolate Biofilms and bacteria such as Salmonella, Listeria, E.coli and many other contaminants are easily located and identified with Bactiscan which makes the remediation job much faster and therefore more cost effective.

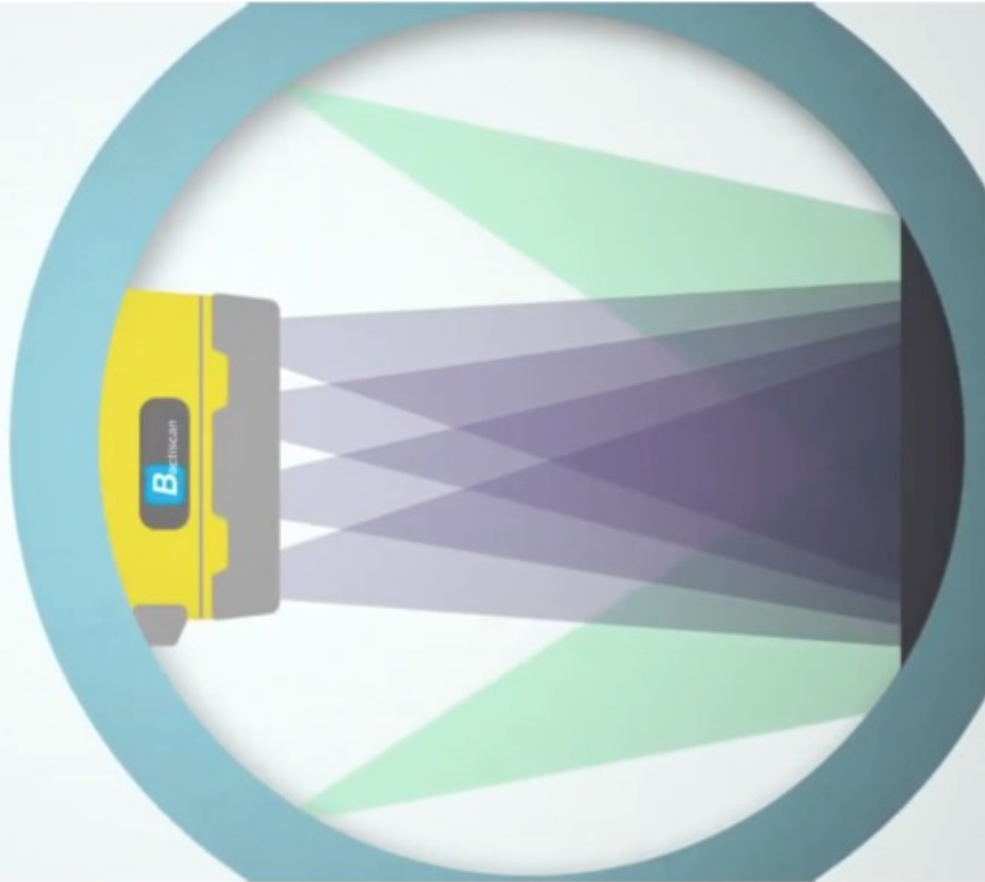


Independently Validated by CampdenBRI
The integrity of Bactiscan™ is independently validated by CampdenBRI for detection of bacteria and biofilms within a laboratory and food industry setting.



Complete illumination of a surface

HIGH INTENSITY
WAVE ALTERNATING
UV LIGHT ENABLES
OPERATOR TO VIEW
LARGE AREAS AT
ONE TIME

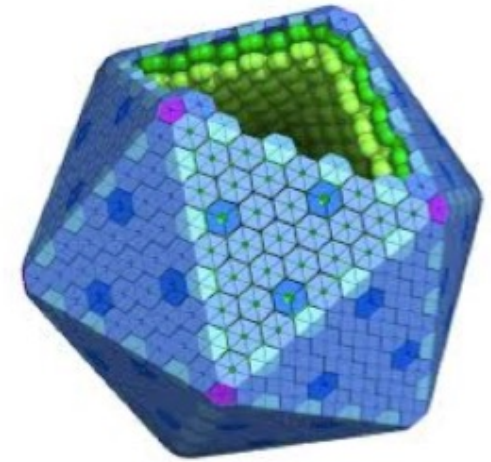
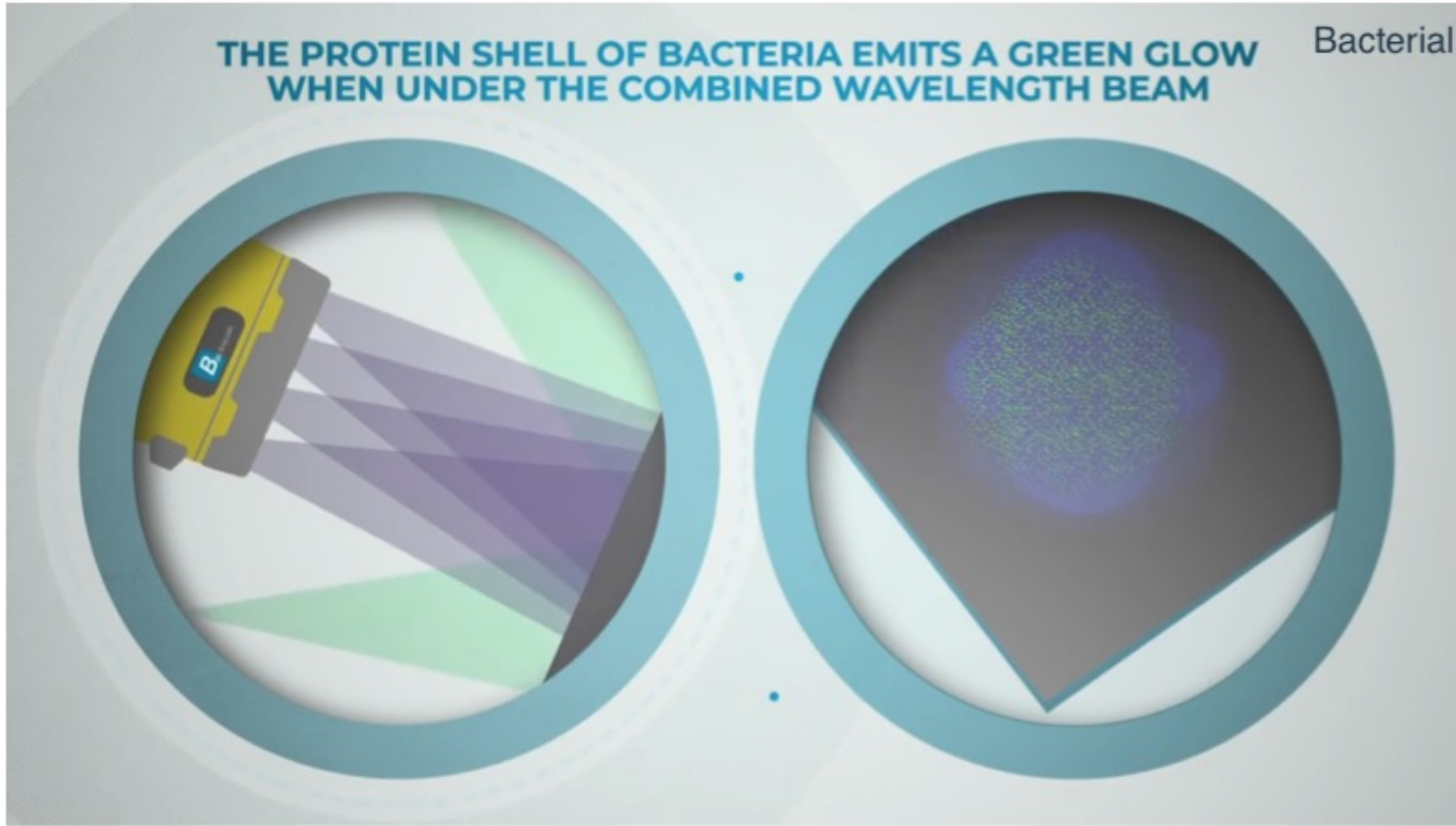


4 separate UV lights, on different frequency's, working on the fringe of the UV spectrum merge together. This is the essence of Bactiscan

Complete illumination of a surface

THE PROTEIN SHELL OF BACTERIA EMITS A GREEN GLOW WHEN UNDER THE COMBINED WAVELENGTH BEAM

Bacterial microcompartments (BMC)



The major constituents of the BMC shell are proteins containing Pfam00936 domain(s). These proteins form oligomers that are hexagonal in shape and are thought to form the facets of the shell.



High Touch Points - Examples



The areas that are cleaned are usually the high touch points.



These are also the areas that we typically swab



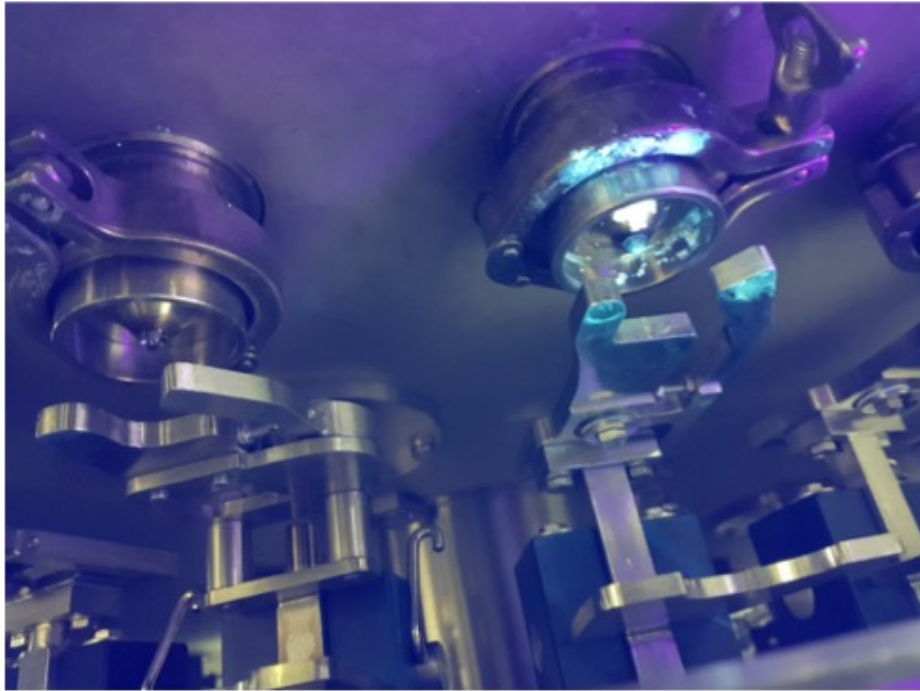
High Touch Points – Meat Production



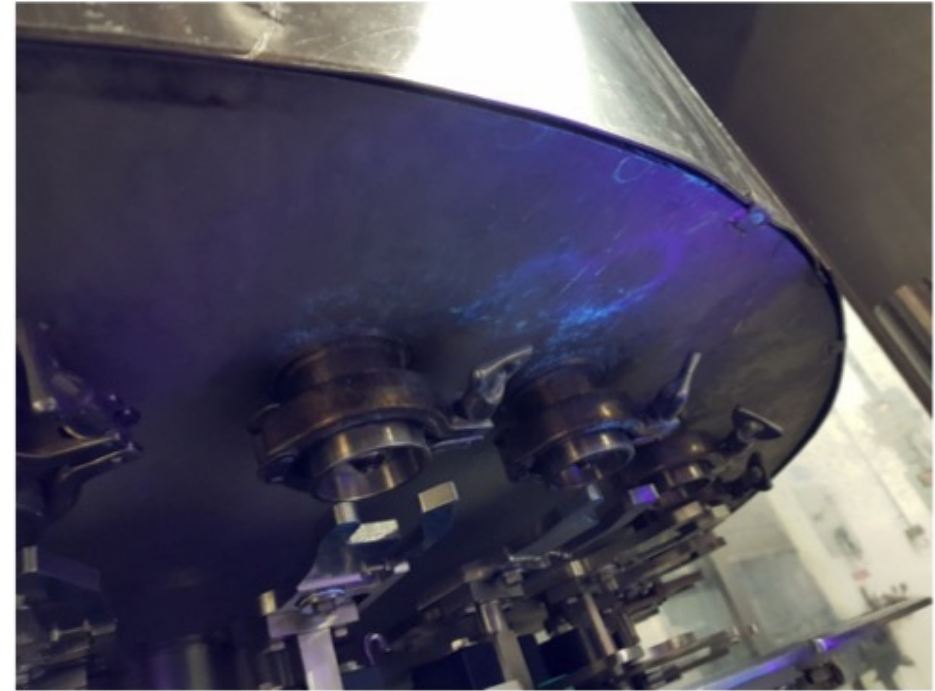
Excellent cleaning regime in place, surfaces have thoroughly been cleaned.

However, Bactiscan reveals contamination that has been missed and may cause serious issues later.

High Touch Points – Dairy (Yogurt)



**Liquid Dairy
Facility - Europe**



High Touch Points – Dairy



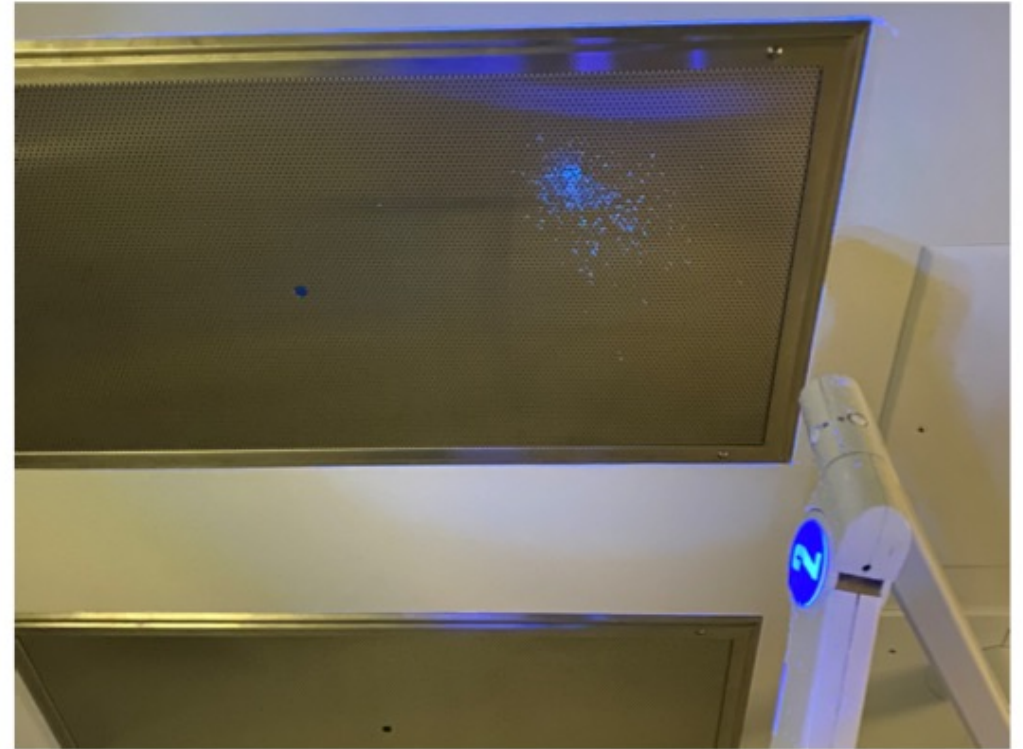
**Dairy
Processing
Facility – UK**



High Touch Points - Healthcare



**Hospital
Operating
Theatre -
Canada**



High Touch Points – Healthcare

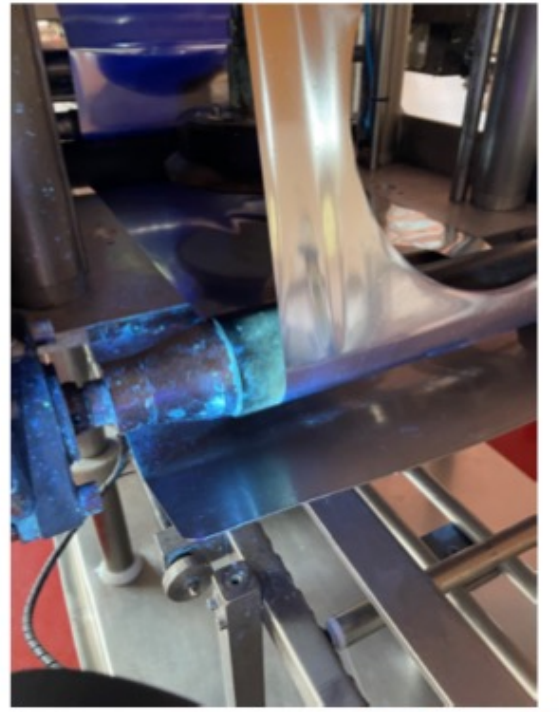
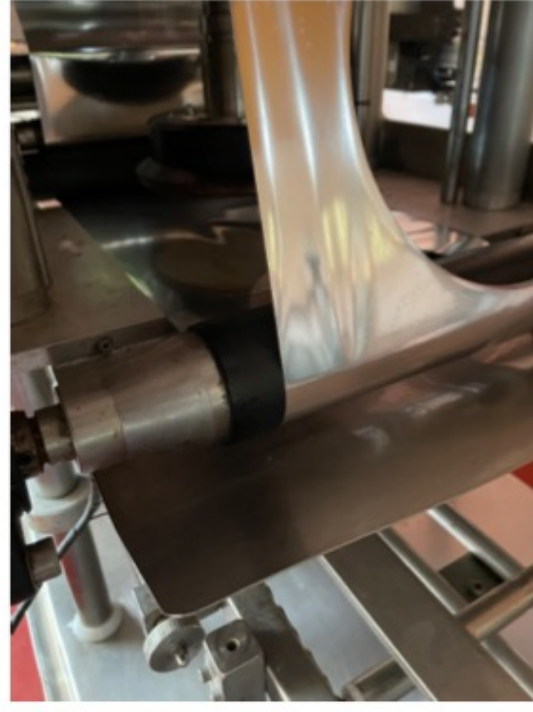


Healthcare
Laboratory



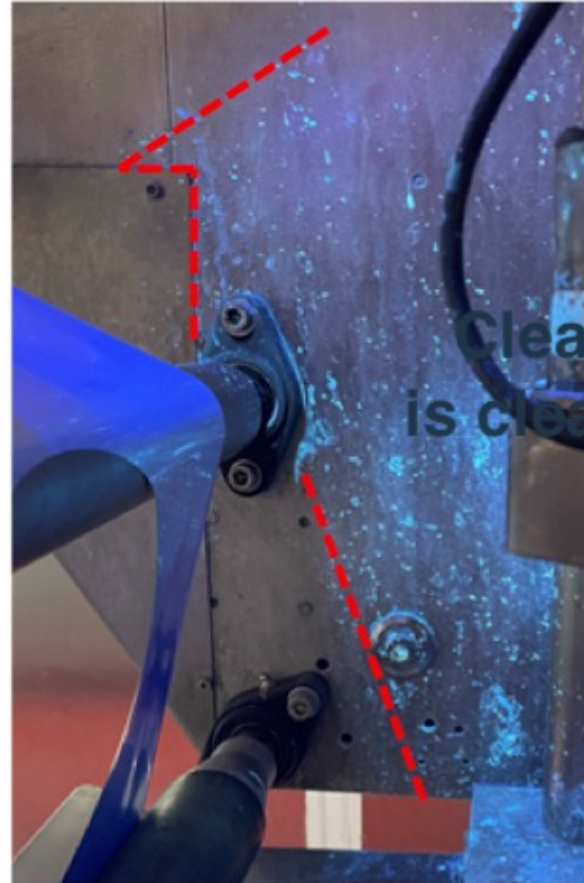
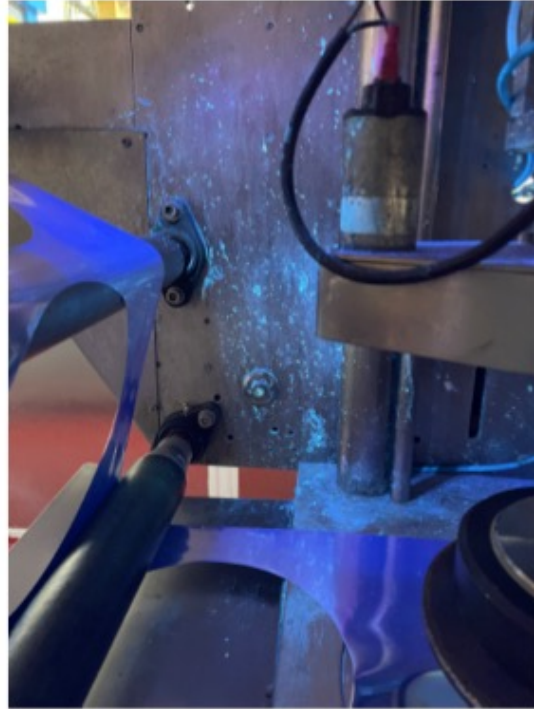


With Bactiscan before, and after illumination





With Bactiscan before, and after illumination



Cleaning line
is clearly visible



Thank You!

Nick Holloway
nick@bactiview.com

www.bactiview.com

07770 834835

Bactiview