



Focus on Antibody and Complement interactions with bacterial pathogens

- Infection immunity
- Innate interactions
- Vaccine assessment
- Effects of strain variation

What do we offer?

- Assays for functional immune assessment
 - Serum bactericidal
 - Opsonophagocytosis
 - ADCD
- Adaptive (antibody & complement)
- Innate (complement only)
- Heavy focus on microbial flow cytometry (ADCD etc)
- IgG and IgM-depleted human complement
- CL3 facilities
- *B. pertussis*, *N. meningitidis*, *N. gono*, NTHi, GBS
 - Large panels of clinical isolates

TB biofilms: Cell wall changes and complement interactions

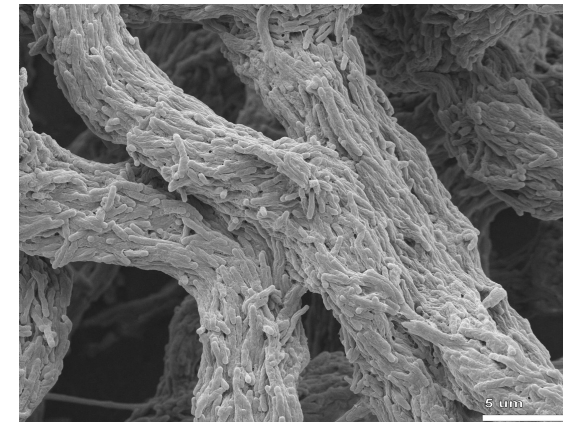
Collaboration with:

- Joanna Bacon's TB Research Group
- Luke Alderwick's cell wall group
- 2 completed PhD projects
- Recent publication

What are we after?

- Collaboration
- Interesting strains
- New techniques
- New directions

@TB_BaconLab
joanna.bacon@phe.gov.uk



The Cell Surface
Volume 7, December 2021, 100065



Mycobacterium tuberculosis modifies cell wall carbohydrates during biofilm growth with a concomitant reduction in complement activation

Thomas Keating ^{1,2,3}, Samuel Lethbridge ⁴, Jon C. Allnut ⁴, Charlotte L. Hendon-Dunn ⁴, Stephen R. Thomas ⁵, Luke J. Alderwick ⁴, Stephen C. Taylor ^{1,2,3}, Joanna Bacon ^{4,5,6}